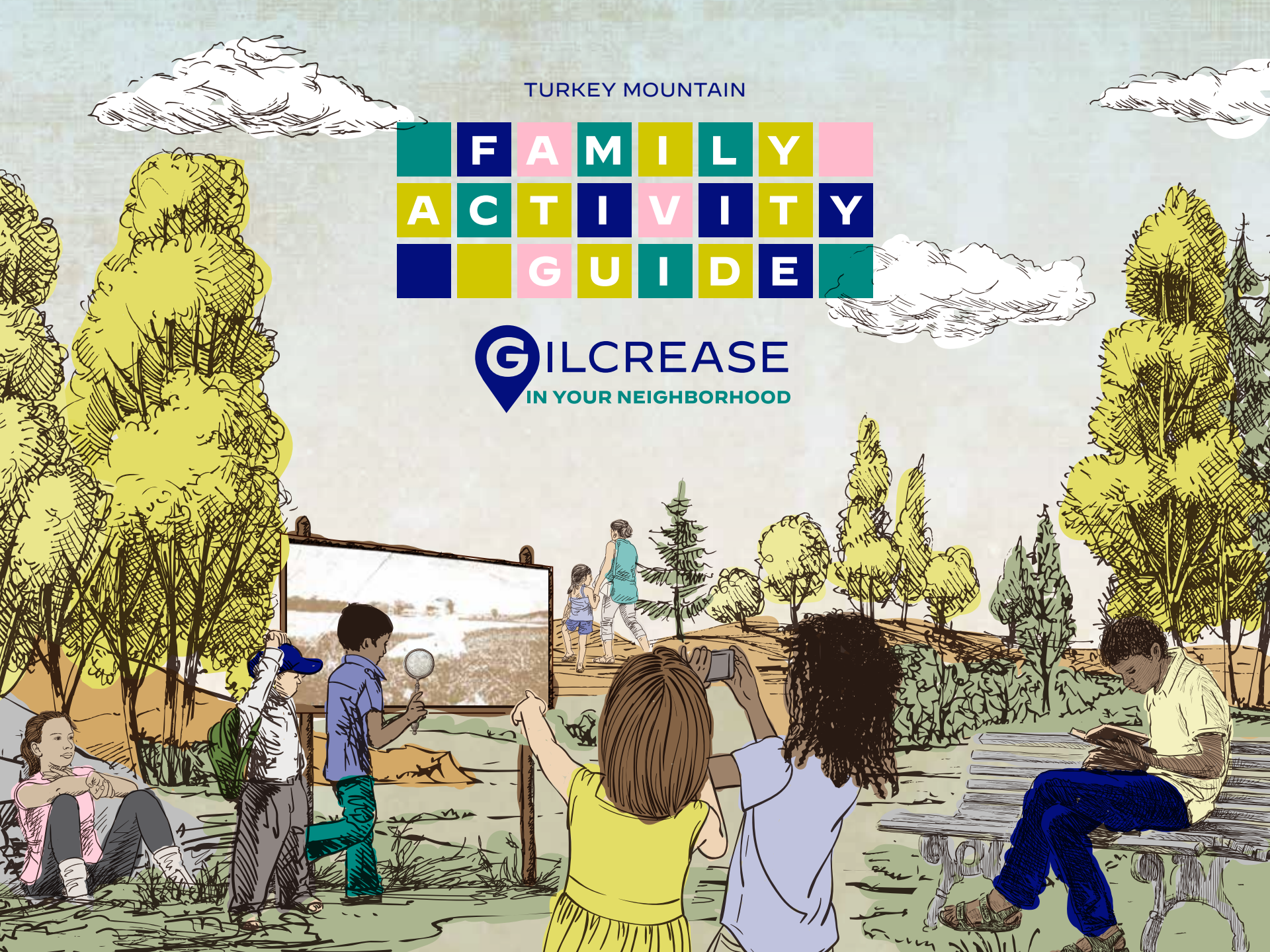


TURKEY MOUNTAIN

FAMILY
ACTIVITY
GUIDE

GILCREASE
IN YOUR NEIGHBORHOOD





Unidentified Photographer, *Willie Peevyhouse Davis Seated in Grass by Water*, c. 1904-1912. Photograph, enlarged from original 2.75 x 3.75 in. Gilcrease Museum, 4327.10400. Gift of Eddie Faye Gates, Tulsa teacher, author and community activist.

▶ BE^a HISTORY Detective



Look for clues in the photograph.

When the photo was taken:

YEAR:

SEASON:

TIME OF DAY:

CLUES:

Where the photo was taken:

CLUES:

Where the photographer was located when they took the photo:

CLUES:

Who is in the photograph and What this person is doing:

CLUES:

What else do you notice about this picture?

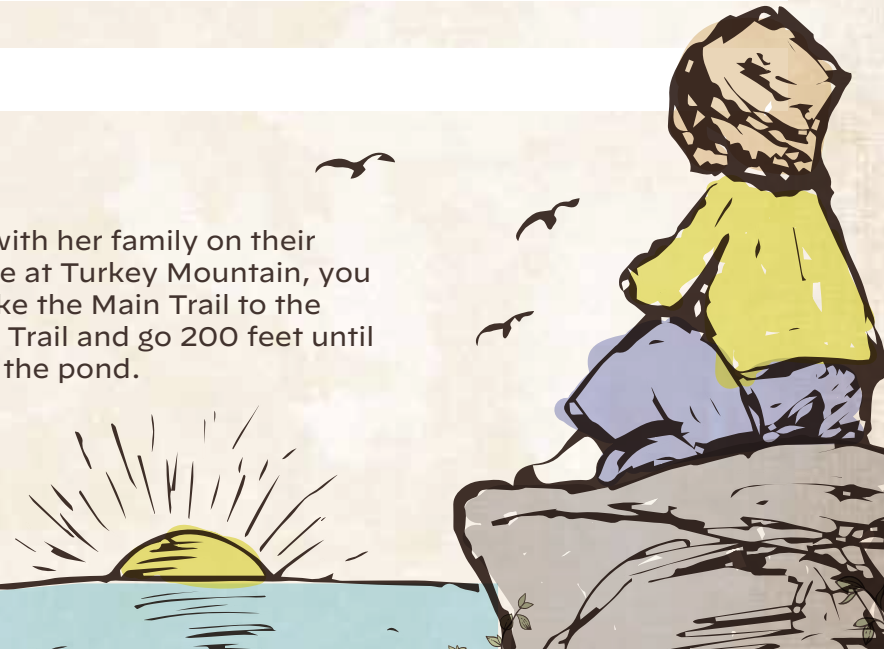
▶ RELAX BY THE WATER

The girl in the photo, Willie Peevyhouse (Davis), worked hard with her family on their farm. In this photo, she is taking time to relax by the water. Here at Turkey Mountain, you can relax by Wagon Wheel Pond. From the main parking lot, take the Main Trail to the Flight Trail stairs up to the top. Turn left at the top to Stay Gold Trail and go 200 feet until you see the Wagon Wheel Trail sign. Take that trail 500 feet to the pond.

Now, sit and relax. **What sounds do you hear?**

What do you see in, around and on the pond?

What do you feel or smell?





► STRIKE A POSE

By the pond, try posing like Willie. Take turns with your group members photographing one another by the water.

Where else would you like to take pictures at Turkey Mountain?

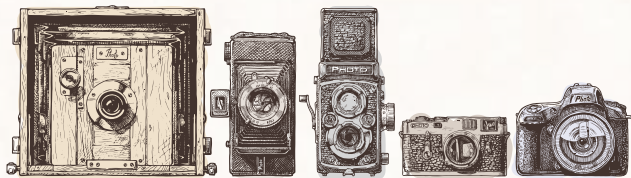
Tag [@gilcreasemuseum](#) on social media to share with us!



► DID YOU KNOW?

Over 100 years ago when Willie was photographed, most people used cameras shaped like a box. They could take only a limited number of photos at a time and had to wait until just the right moment to snap a photo. No one knew exactly what their photographs would look like until later when they were printed on special paper. They could only share photos with others by printing them.

What do you wonder about the children with cameras in the photograph to the right from 1905?



Francis Benjamin Johnson, *Three Children Sighting Box Cameras*, ca. 1905. Photograph. Frances Benjamin Johnston Photograph Collection, Library of Congress, Prints & Photographs Division, [LC-USZ62-47761].

▶ TIME TRAVEL ON TRAILS

Did you know that Turkey Mountain (and much of Tulsa) was built on the Muscogee Nation reservation?

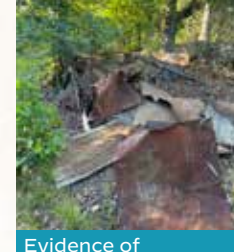
Turkey Mountain was also once an oil well drilling site. Some of the features at Turkey Mountain from the oil field days are more than 100 years old. **Walk through Turkey Mountain's history and find all the features on the scavenger hunt below on the following trails:** The Flight, Wagon Wheel Trail, Tulsa Family Trail, Straight to the Top, and the southern portion of the Stay Gold Loop that connects Wagon Wheel Trail to Straight to the Top.



Wagon wheel from the 1920s



Stone staircase built in 2023



Evidence of historic homesteads from 1940s



Overlook of the Arkansas River in 2024



Concrete oil pumpjack stands from 1911-1945



Signs in Muscogee language added in 2023



Fossils that are 295-305 million years old



Old-growth Forest with some 250-year-old trees



Ponds used for cattle ranching in the 1940s and 1950s

▶ DISCUSS & DRAW

Willie moved with her family from Texas to what is now Oklahoma in 1904. Many Black families like hers came to this area hoping it would be a place where they could live freely and put down roots.

The photograph of Willie Peevyhouse (Davis) is an important family and community artifact. An artifact is something that gives us information about life in the past.

What is an artifact that is important to your family or community? What makes it special?

Draw a picture of your artifact in the frame on the right.

My artifact _____



MATERIALS

Pringles tube
(keep the lid!)

Hobby craft knife
(get a grownup to help!)

Scissors

Ruler

Pen or pencil

Small piece of
wax paper

Black paint
or duct tape

Tape

Push pin

▶ CREATE AT HOME

With the help of a grownup, use items around your house to make your own pinhole camera and experience what it may have been like to take pictures nearly 100 years ago!

INSTRUCTIONS

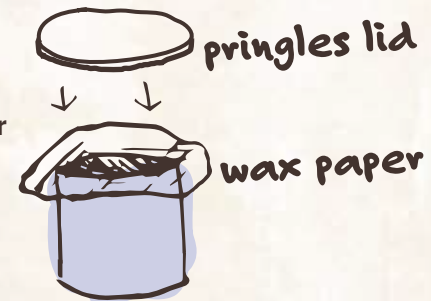
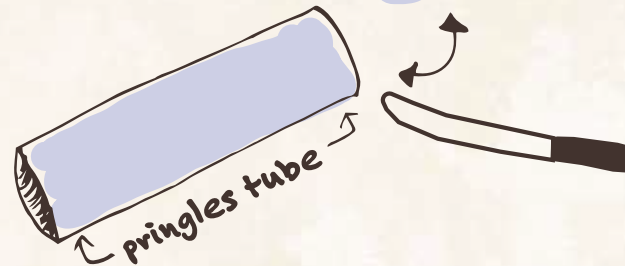
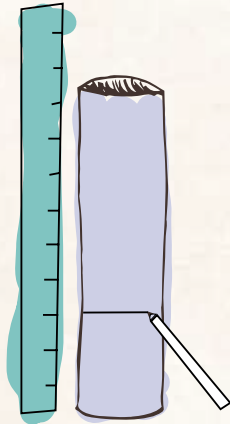
1 Take the plastic lid off the empty Pringles tube and set it aside.

2 Use a ruler to measure three inches from the bottom of the tube. Use a pen or pencil to make a small mark.

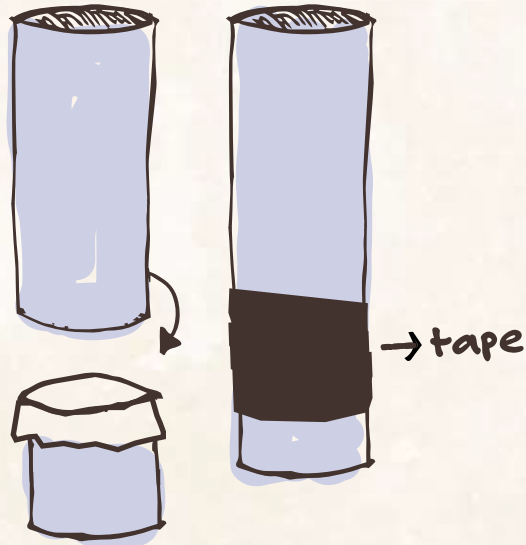
3 Have a grownup carefully cut all the way around the level of the small mark using a craft knife so that the tube is in two pieces.

4 Cut a circle out of wax paper that is slightly larger than the lid.

5 Set the wax paper on top of the smaller piece of the tube. Then put the lid over it to secure it.



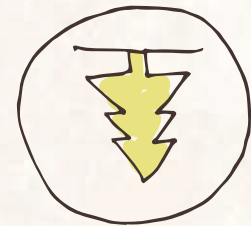
6 Next, put the longer piece of the tube on top of the smaller piece and tape the two pieces together.



7 To block out any light, paint the outside of the tube black or cover with black duct tape.



8 Finally, flip the tube upside down so that the metal part is facing up, and use a push pin to create a small hole.



9 Now the camera is ready to use! Go outside on a sunny day and hold the opening of the tube up to your eye. You should be able to see the world around you upside-down!

LEARN MORE

Visit Tulsa City-County Library branches to check out this related reading list curated by Larissa McNeil, African American Resource Center Coordinator.

No Place Like Home: A Story About An All-Black, All-American Town
by Hannibal B. Johnson

Black Birds in the Sky: The Story and Legacy of the 1921 Tulsa Race Massacre
by Brandy Colbert

What's Great About Oklahoma?
by Sheri Dillard

Guide to Photography
by Nancy Honovich

Gordon Parks
by Carole Boston Weatherford

Happy to Be Nappy
by bell hooks

Juneteenth for Mazie
by Floyd Cooper

Saturday
by Oge Mora

My People
by Langston Hughes

We Are Shining
by Gwendolyn Brooks



Learn more about Gilcrease in Your Neighborhood, this artwork, and see a full list of sponsors.

Gilcrease in Your Neighborhood is made possible throughout the Tulsa community with support provided by

- Arts Alliance Tulsa
- Dan E. and Neva L. Brannin Charitable Foundation
- Frank and Carol Mulhern
- William S. Smith Charitable Trust
- Charles and Marion Weber Foundation
- Kathleen P. Westby Foundation
- Windgate Charitable Foundation Endowment



RIVERPARKS
AUTHORITY