

RAY HARRAL NATURE CENTER

FAMILY
ACTIVITY
GUIDE





Miguel Covarrubias (1904-1957), *Tehuana Woman*, c. 1940-1950.
Gouache on paper, 20 x 14 (original) in. Glicrease Museum, 02.1475

Imagine & Connect WITH SENSES



If you could step inside this painting by artist Miguel Covarrubias, **what would you hear? See? Feel? Smell?**

Now find a quiet spot under the trees and connect with your senses.

Close your eyes. **What do you smell? Feel? Hear?**
Open your eyes. **What do you see all around you?**

LOOK FOR COLORS

Miguel loved the bright colors he saw in Tehuantepec, Mexico, especially at festivals like the one shown in the painting.
What colors do you see in his *Tehuana Woman* painting?

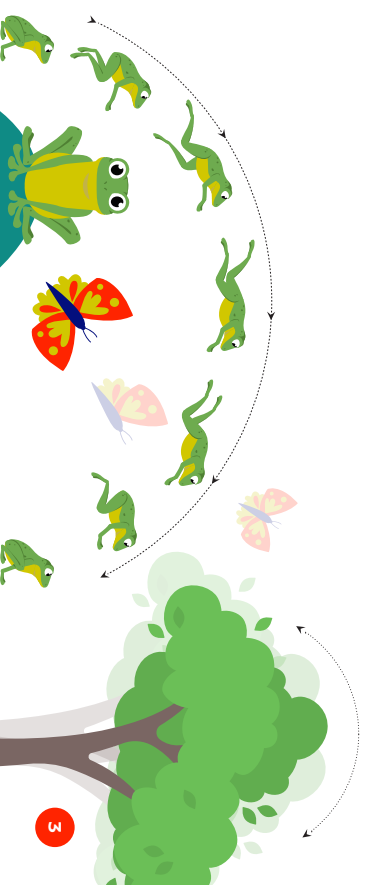
Now play "I Spy" with your group to find those same colors around you at the Ray Harral Nature Center.



COUNT & DANCE

Look at the people dancing in the background of the *Tehuana Woman* painting.
How many dancers can you find? _____.

Find an open space for your group to make up your own dance and movements inspired by the plants and wildlife around you! Hop like a frog, flap your wings like a butterfly, and sway like a tree! **What other moves can you come up with inspired by the plants and animals around you?**

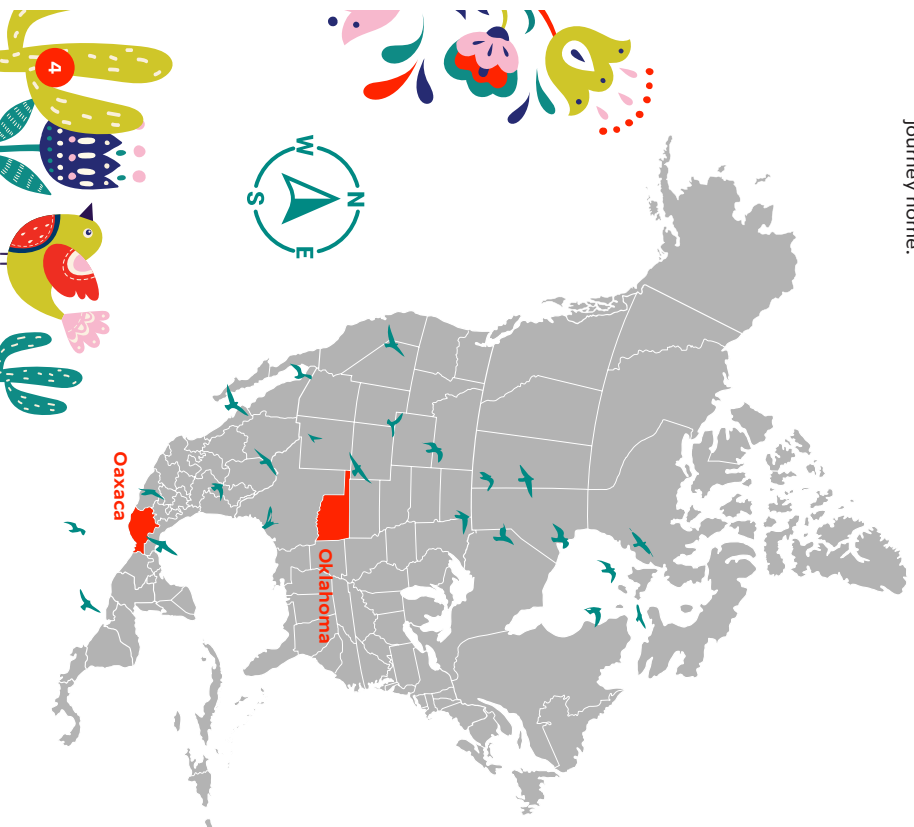


► BIRDS CONNECT OUR WORLD!

Artist Miguel Covarrubias was from Mexico, and loved visiting the state of Oaxaca shown in this painting. Many of the birds that call our forest home visit Mexico in the winter and fly back north in the spring. **Look up at the sky and in the trees - what kind of birds do you see? What direction are they flying?**

Can you locate north on the compass?

On the map below, find **Oaxaca** and trace the path you would need to fly to journey home.



► DRAW YOUR OWN CELEBRATION

The girl in the painting is dressed up for a party.

What do you notice about her clothing, jewelry and hairstyle?

Think of a community or family celebration that is important to you. Imagine that you could hold this celebration at the Ray Harrell Nature Center. **What would you wear for this special day? Draw yourself and loved ones at the celebration on the next page.**

Name _____ Age _____

My celebration _____

Place _____

► SHOW YOUR ART

Do you want to show your art to others?
Bring your family celebration drawing to:

Curations (Gilcrease store)
101 E Archer St. Tulsa, OK 74103

Store hours: Wednesday–Saturday, 12 to 5 p.m.

We'll exhibit your drawing and host a special party for artists and your families! Plus, you'll receive a coupon for a store discount.

► PICK UP YOUR PRIZE!

Thanks for participating in Gilcrease in Your Neighborhood and visiting the Ray Harrell Nature Center! Head to the information desk at the visitor center to pick up your prize.



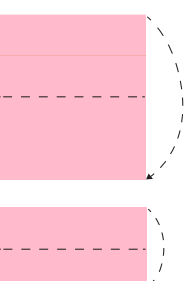


▶ TRY THIS AT HOME!

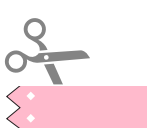
The community celebration in the *Tehuana Woman* painting takes place in a village square under tall trees. The trees in the painting are decorated with brightly colored paper banners called papel picado. Make your own papel picado!



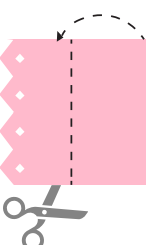
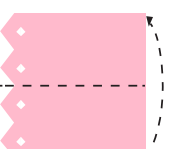
1. Cut tissue paper into square sheets.



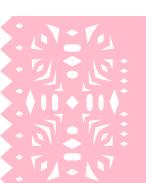
2. Fold one sheet down in half, and then in half again in the same direction.



3. Cut triangles along the bottom and/or other shapes along the edges.

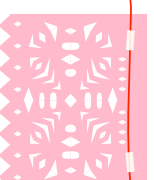


4. Unfold once and fold the top down. Cut out more simple shapes along all of the edges. Be sure to leave some uncut areas so your design doesn't come apart.



5. Unfold your paper to reveal your design!

6. Fold the top side of the tissue paper over yarn and tape or glue closed.



Cut out more sheets of papel picado and string together to create a banner for decoration in your home or community!



READ AND LEARN MORE



Check out this book list inspired by Miguel Covarrubias' painting, *Tehuana Woman*.
Titles are available for check out at Tulsa City-County Library branches.

Vámonos a Oaxaca
by Patty Rodriguez

ABeCedarios: Mexican Folk Art ABCs
(in English and Spanish)
by Cynthia Weill and K.B. Basseches,
illustrated by
Moisés and Armando Jiménez

Colors!/Colores!
by Jorge Luján

*Making Magic Windows:
Creating Papel Picado/Cut-Paper Art
With Carmen Lomas Garza*
by Carmen Lomas Garza

*Celebrations: Holidays of the United States
of America and Mexico/
Celebraciones: Días Feriados De Los
Estados Unidos y Mexico*
by Nancy Tabor

Costume Around the World: Mexico
by Jane Bingham

*The Food of Oaxaca: Recipes and Stories
From Mexico's Culinary Capital*
by Alejandro Ruíz

*Where Do the Birds Go?:
A Migration Mystery*
by Rebecca Olien



Gilcrease in Your Neighborhood is made possible
throughout the Tulsa community with support provided by

Arts Alliance Tulsa
Dan E. and Neva L. Brannin Charitable Foundation
Frank and Carol Mulhern
William S. Smith Charitable Trust
Charles and Marion Weber Foundation
Kathleen P. Westby Foundation
Windgate Charitable Foundation Endowment



Learn more about
Gilcrease in Your
Neighborhood, this
artwork, and see a
full list of sponsors.



CITY OF
BROKEN ARROW
Where opportunity lives