

GATHERING PLACE

FAMILY
ACTIVITY
GUIDE



 **GILCREASE**
IN YOUR NEIGHBORHOOD



Miguel Covarrubias (1904-1957), *Tehuana Woman*, c. 1940-1950.
Gouache on paper, 20 x 14 (original) in. Gilcrease Museum, 02.1475

Imagine & Connect WITH SENSES



If you could step inside this painting by artist Miguel Covarrubias, **what would you hear? See? Feel? Smell?**

Now take a moment to connect with your senses right where you are.

Close your eyes. **What do you smell, feel and hear in the park right now?**

Open your eyes. **What do you see all around you?**

LOOK FOR COLORS



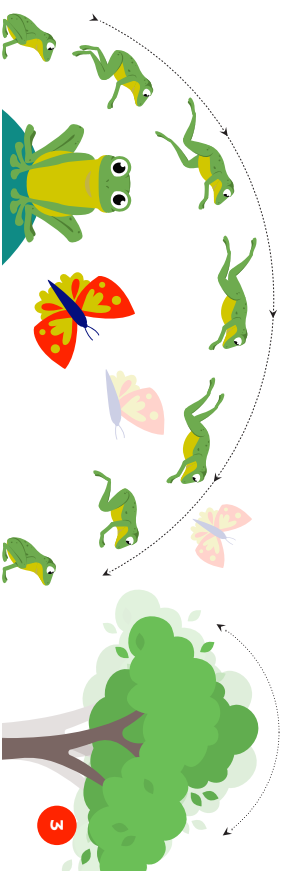
Miguel loved the bright colors he saw in Tehuantepec, Mexico, especially at festivals like the one shown in the painting. **What colors do you see in his *Tehuana Woman* painting?**

Now play "I Spy" with your family or group, and find those same colors around you at Gathering Place. Visit **Chapman Adventure Playground**, **Willow Beach** at **Peggy's Pond**, or **ONEOK Boathouse** to view many wonderful colors in the park!

COUNT & DANCE

Look at the people dancing in the background of the *Tehuana Woman* painting. **How many dancers can you find? _____.**

Find an open space for your group to make up your own dance and movements inspired by the plants and wildlife around you! Hop like a frog, flap your wings like a butterfly, and sway like a tree! **What other moves can you come up with inspired by nature and your surroundings at Gathering Place?**



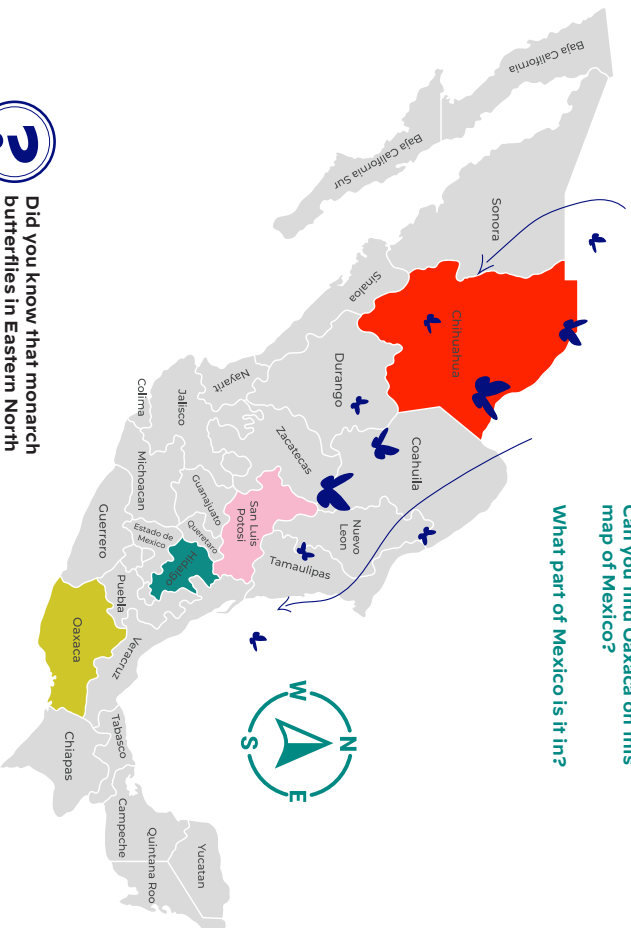


▶ JOURNEY TO MEXICO

Artist Miguel Covarrubias was from Mexico, and often visited Tehuantepec, the place shown in this painting (he even wrote and illustrated a book about it!). Tehuantepec is in the state of Oaxaca.

Can you find Oaxaca on this map of Mexico?

What part of Mexico is it in?



Did you know that monarch butterflies in Eastern North America journey to Mexico every year?

On their way south, they pass through Oklahoma. Some of these monarch butterflies stop at Gathering Place to drink the sweet nectar found in plants like milkweed. The nectar gives them energy to continue their journey!



Gilcrease in Your Neighborhood - Family Activity Guide - Gathering Place

▶ DRAW YOUR OWN CELEBRATION

The girl in the painting is dressed up for a party.

What do you notice about her clothing, jewelry and hairstyle?

Think of a community or family celebration that is important to you. Imagine that you could hold this celebration at Gathering Place. **What area of the park would you use? What would you wear for this special day? Draw yourself and loved ones at a celebration on the back of this page.**

Name _____ Age _____

My celebration _____

Place _____

▶ SHOW YOUR ART

Do you want to show your art to others?

Bring your family celebration drawing to:

Curations (Gilcrease store)
101 E Archer St. Tulsa, OK 74103

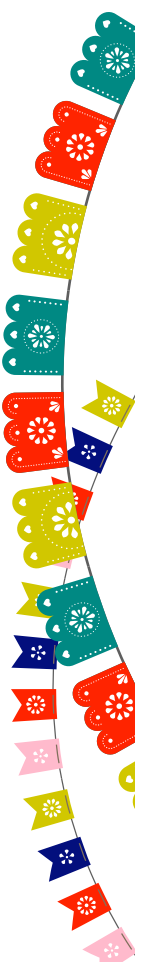
Store hours: Wednesday-Saturday, 12 to 5 p.m.

We'll exhibit your drawing and host a special party for artists and your families! Plus, you'll receive a coupon for a store discount.

▶ PICK UP YOUR PRIZE!

Thanks for participating in Gilcrease in Your Neighborhood and visiting Gathering Place. Now head to the **Guest Services** window in **Williams Lodge** to pick up your prize!





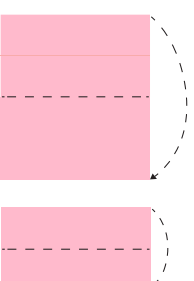
Try This at Home!

▶ **MAKE YOUR OWN PAPEL PICADO**

The community celebration in the *Tehuana Woman* painting takes place in a village square under tall trees. The trees in the painting are decorated with brightly colored paper banners called papel picado. Make your own papel picado!



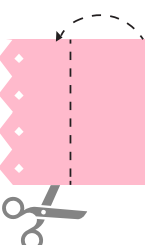
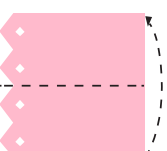
1. Cut tissue paper into square sheets.



2. Fold one sheet down in half, and then in half again in the same direction.



3. Cut triangles along the bottom and/or other shapes along the edges.

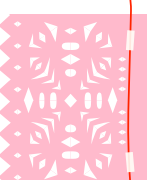


4. Unfold once and fold the top down.

Cut out more simple shapes along all of the edges. Be sure to leave some uncut areas so your design doesn't come apart.

5. Unfold your paper to reveal your design!

6. Fold the top side of the tissue paper over yarn and tape or glue closed.



Cut out more sheets of papel picado and string together to create a banner for decoration in your home or community!



READ AND LEARN MORE



Check out this book list inspired by Miguel Covarrubias' painting, *Tehuana Woman*.
Titles are available for check out at Tulsa City-County Library branches.

Vámonos a Oaxaca

by Patty Rodriguez

ABeCedarios: Mexican Folk Art ABCs

(in English and Spanish)

by Cynthia Weill and K.B. Basseches,
illustrated by Moisés and Armando Jiménez

Colors!/Colores!

by Jorge Luján

Traveling Butterflies

by Susumu Shingū

*Celebrations: Holidays of the United States of America and Mexico/
Celebraciones: Días Feriados De Los Estados Unidos y México*

by Nancy Tabor

*Making Magic Windows: Creating Papel Picado/
Cut-Paper Art With Carmen Lomas Garza*

by Carmen Lomas Garza

Costume Around the World: Mexico

by Jane Bingham



Gilcrease in Your Neighborhood is made possible
throughout the Tulsa community with support provided by

Arts Alliance Tulsa

Dan E. and Neva L. Brannin Charitable Foundation

Frank and Carol Mulhern

William S. Smith Charitable Trust

Charles and Marion Weber Foundation

Kathleen P. Westby Foundation

Windgate Charitable Foundation Endowment



Learn more about
Gilcrease in Your
Neighborhood, this
artwork, and see a
full list of sponsors.



GATHERING PLACE
TULSA'S RIVERFRONT PARK